

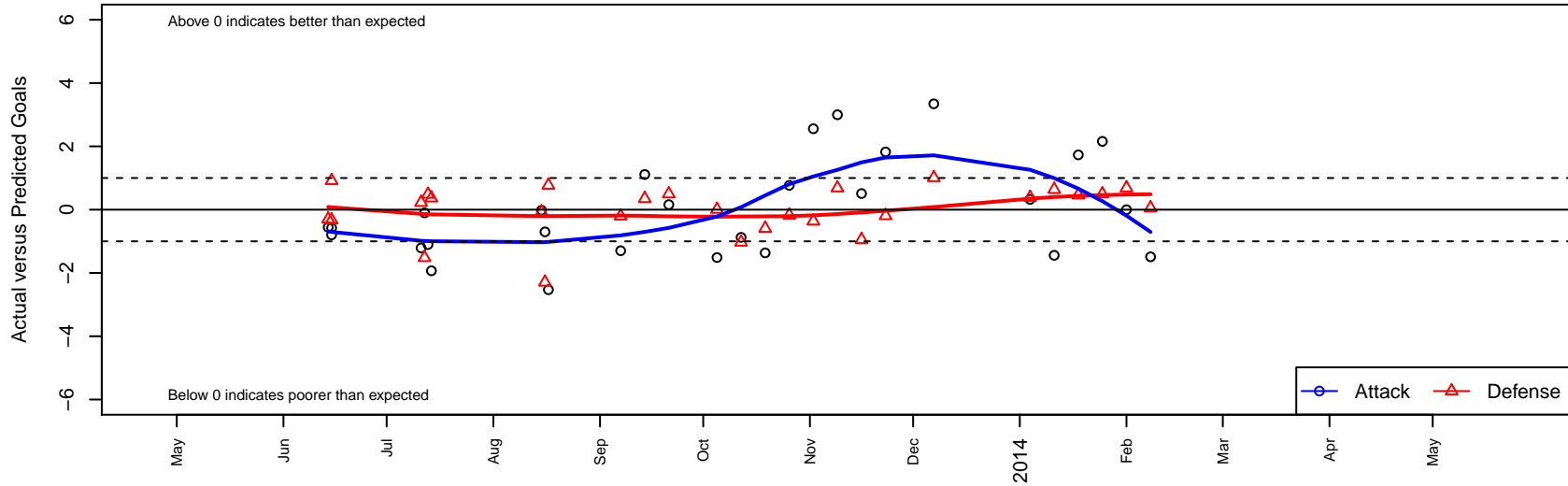
Kent United Green G00

Kent United
 Kent, WA
 G00 total strength=963
 attack=1.9 defense=1.63
 fall league = NPSL G13D1
 notes= Richardon 2013
 alt names used:
 Kent United GU00 Green
 Kent United Green [G00]
 KYSA KENT UNITED G00 GREEN (WA)
 KCYS KENT UNITED G00 GREEN (WA)
 Kent United G00 Green

Venues played:
 Starfire Spring Classic GU13
 Kent Cornucopia Cup GU12/GU13 Gold U13
 Bigfoot Silver U13
 NPSL G13D1
 Founders Cup G00



Kent United Green G00
 Dots are actual minus expected GF (blue circles) and GA (red triangles).
 Blue line is smoothed change in attack strength. Red is smoothed change in defense strength.



	date	home		away		venue	pred.home	pred.away
223	2014-02-08	Kent United Green G00	0	Lake Hills Pumas G00	1	Founders Cup G00	1.49	1.05
195	2014-02-01	Kent United Green G00	2	Newport FC G00	0	Founders Cup G00	2.00	0.68
170	2014-01-25	Kent United Green G00	4	SCORE Rockets G00	0	Founders Cup G00	1.84	0.49
119	2014-01-18	Kent United Green G00	5	FC Salmon Creek Nemesis Real Yellow G00	0	Founders Cup G00	3.27	0.46
083	2014-01-11	Crossfire Select Habash G00	0	Kent United Green G00	0	Founders Cup G00	0.64	1.44
056	2014-01-04	Seattle United NE White G00	0	Kent United Green G00	6	Founders Cup G00	0.38	5.67
038	2013-12-07	Kent United Green G00	5	FC Edmonds Crew G00	0	NPSL G13D1	1.66	1.01
880	2013-11-23	FME Rage G00	2	Kent United Green G00	3	NPSL G13D1	1.81	1.18
1779	2013-11-16	Kent United Green G00	2	Lake Hills Pumas G00	2	NPSL G13D1	1.49	1.05
676	2013-11-09	Newport FC G00	0	Kent United Green G00	5	NPSL G13D1	0.68	2.00
527	2013-11-02	Kent United Green G00	4	Crossfire Select Habash G00	1	NPSL G13D1	1.44	0.64
369	2013-10-26	Seattle United S Blue G00	1	Kent United Green G00	2	NPSL G13D1	0.83	1.23
219	2013-10-19	Kent United Green G00	1	Seattle United NE Blue G00	1	NPSL G13D1	2.37	0.41
1028	2013-10-12	MIFC Maroon G00	2	Kent United Green G00	1	NPSL G13D1	0.97	1.88
345	2013-10-05	Kent United Green G00	0	Crossfire Select Metzger G00	1	NPSL G13D1	1.51	1.01
521	2013-09-21	SCORE Rockets G00	0	Kent United Green G00	2	NPSL G13D1	0.49	1.84
357	2013-09-14	BIFC Blue G00	1	Kent United Green G00	3	NPSL G13D1	1.35	1.89
194	2013-09-07	Kent United Green G00	0	Seattle United Shoreline Blue G00	1	NPSL G13D1	1.30	0.79
350	2013-08-17	Kent United Green G00	0	LWPFC White Barracudas G00	0	Bigfoot Silver U13	2.53	0.77
314	2013-08-16	Kent United Green G00	1	NSC Spirit G00	3	Bigfoot Silver U13	1.70	0.71
304	2013-08-15	Kent United Green G00	2	WPFC Fury White G00	1	Bigfoot Silver U13	2.02	0.92
316	2013-07-14	Kent United Green G01	0	Kent United Green G00	1	Kent Cornucopia Cup GU12/GU13 Gold U13	0.37	2.93
278	2013-07-13	Kent United Green G00	2	West Seattle En Fuego G01	0	Kent Cornucopia Cup GU12/GU13 Gold U13	3.10	0.48
235	2013-07-12	West Seattle En Fuego G01	2	Kent United Green G00	3	Kent Cornucopia Cup GU12/GU13 Gold U13	0.48	3.10
224	2013-07-11	Orting FC Pumas G01	0	Kent United Green G00	2	Kent Cornucopia Cup GU12/GU13 Gold U13	0.23	3.21
384	2013-06-15	Kent United Green G00	0	Snohomish United Black G00	0	Starfire Spring Classic GU13	0.58	0.92
387	2013-06-15	FC Alliance A G00	3	Kent United Green G00	0	Starfire Spring Classic GU13	2.67	0.80
343	2013-06-14	Kent United Green G00	0	Seattle United Tango G00	2	Starfire Spring Classic GU13	0.56	1.70